

地鐵公司

MTR Corporation

**Progress Update on
Tseung Kwan O Extension
Presentation to Sai Kung District Council**

Henry Lam, Project Manager (TKE/QBR)

27 November 2001

Tseung Kwan O Extension - Route Map



Yau Tong Station

- ◆ Permanent electricity supply available on 12 November
- ◆ ABWF 75% complete



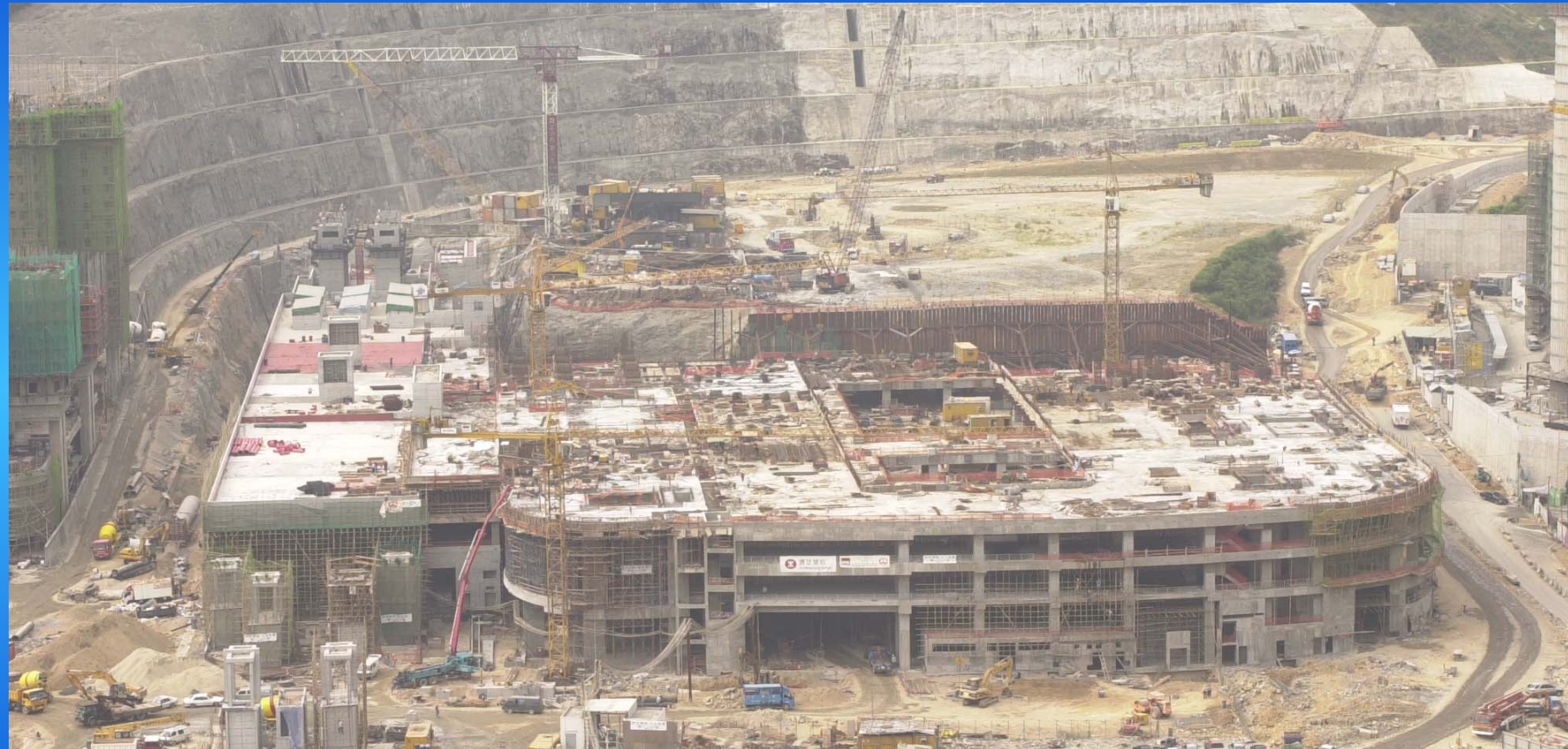
Tiu Keng Leng Station & Tunnels



- ◆ PSD installation complete at Lower Platform
- ◆ BS 2nd fix installation 84% complete



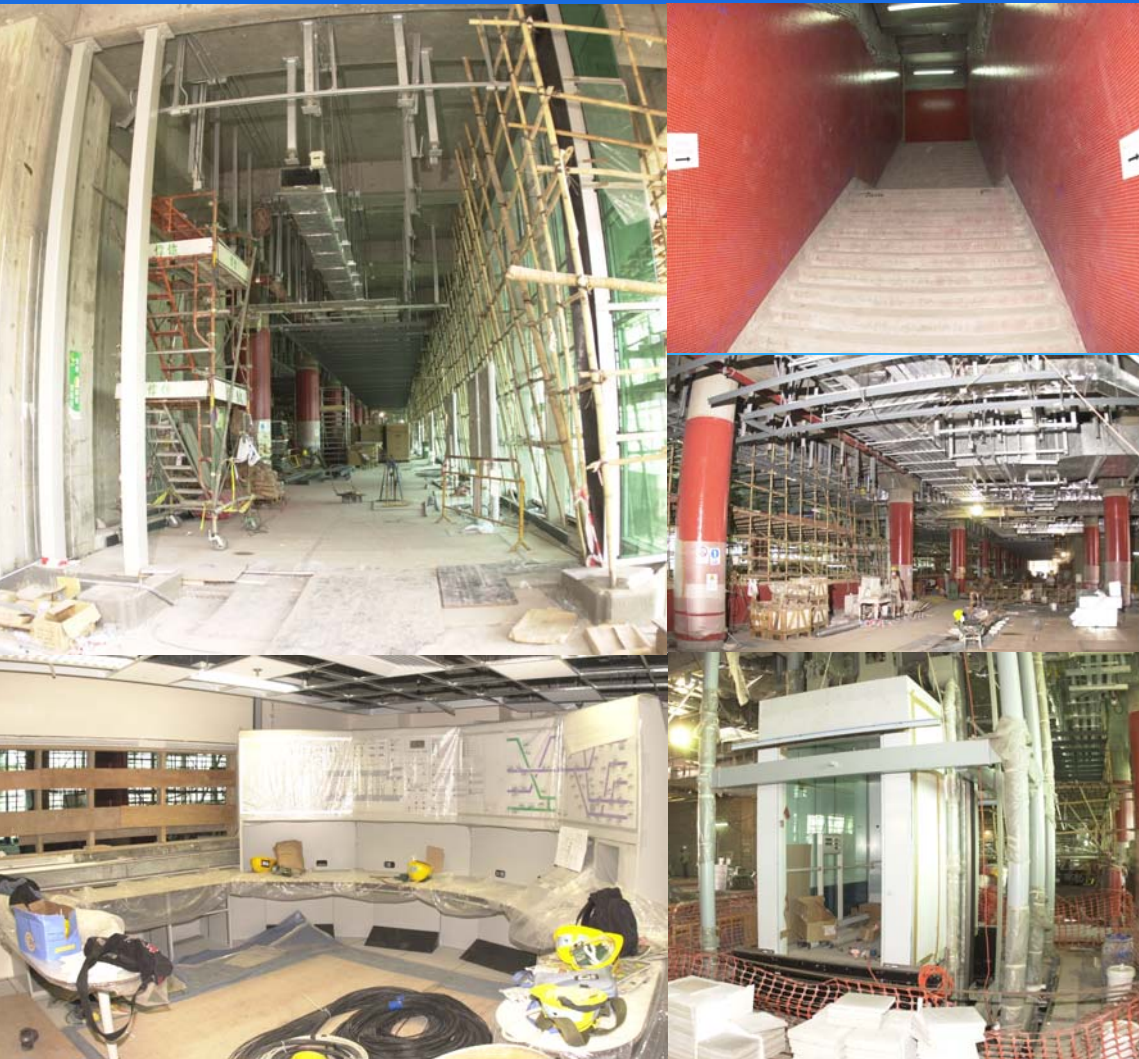
PTI at Tiu Keng Leng Station



- ◆ PTI structural works complete
- ◆ ABWF and BS installation commenced



Tseung Kwan O Station & Tunnels



- ◆ SCR fit-out and equipment installation substantially complete
- ◆ PSD site acceptance tests commenced
- ◆ BS 2nd fix installation 80% complete
- ◆ LV power on achieved on 3 November



PTI at Tseung Kwan O Station



- ◆ PTI structural works complete
- ◆ ABWF and BS installation commenced



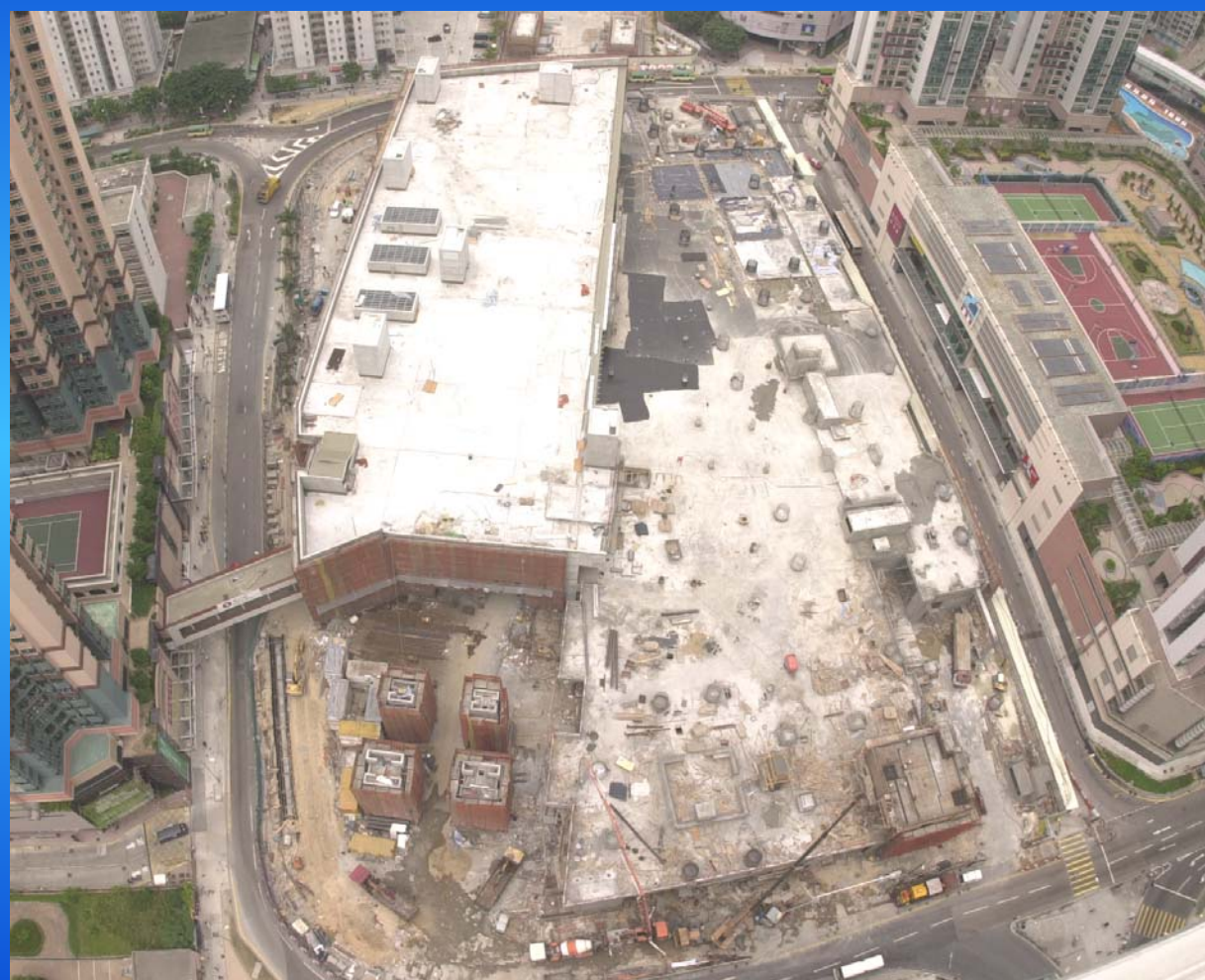
Hang Hau Station and Tunnels



- ◆ SCR equipment installation substantially complete
- ◆ 2nd fix BS installation 65% complete



PTI at Hang Hau Station



- ◆ PTI structural works complete
- ◆ ABWF and BS installation commenced



Po Lam Station



- ◆ PSD installation complete
- ◆ 2nd fix BS installation 80% complete



Site Formation/Landscaping next to Po Lam Station



- ◆ All major works complete
- ◆ Handover inspections carried out in November 2001



Footbridge No.5 to Po Lam Station



- ◆ All major works complete
- ◆ Handover inspections carried out in November 2001



Tseung Kwan O Depot



- ◆ All major equipment in position
- ◆ BS installation 85% complete
- ◆ LV electricity energization progressively achieved



THE END

